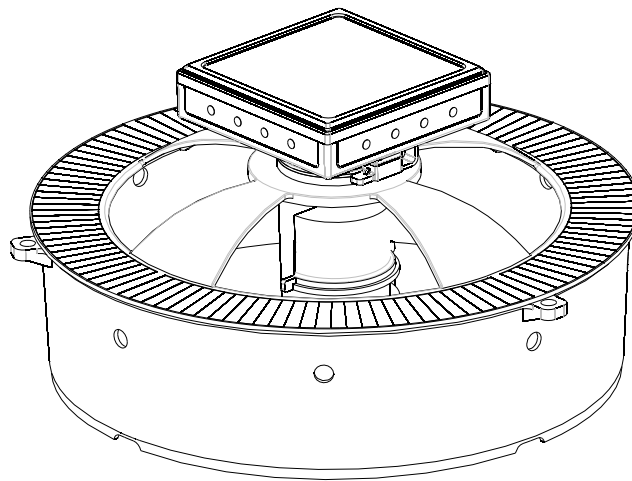


148mm



Operators Manual



210mm



New Mountain Int'l Pte Ltd.
48 Toh Guan Road East,
#06-139 Enterprise Hub
Singapore 608586
T: +65 6841 2986
www.newmountainintl.com

US/INTERNATIONAL PATENT Pending NO. US2017/033798



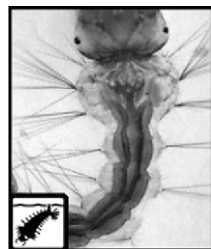
2019/12/2

Introduction

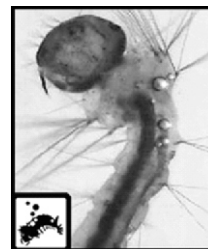
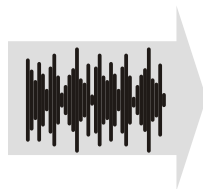
Thank you for purchasing the SIRENIX™ mosquito control system. This represents over 15 years of researching mosquito larvae physiology and behavior to give you a maintenance free and environmentally friendly method to control mosquitoes. We have joined the revolutionary Larvasonic® technology with multiple natural attractants to lure pregnant (gravid) female mosquitoes ready to lay her eggs. Once the eggs are deposited in our system the unique Larvasonic® acoustic energy kills the offspring, ending the lifecycle and reducing adult mosquito populations.

Gravid female mosquitoes are naturally searching for the ideal place to lay her eggs. Her primary attractant is water, she can both see and smell the water in the SIRENIX™. Many like a shady area such as typically found in abandoned tires, the SIRENIX™ geometry gives shade spot at all times of daylight. Certain colors and patterns also are attractive, black and white striped design attracts daylight fliers and our BLUE/UV led cycling light attracts by both the wavelength and the illusion of motion.

Once the eggs hatch into larvae they become susceptible to acoustic energy that is emitted into the water by the transducer. This acoustic energy vibrates the gas within the larvae causing it to rupture internal organs and instantly kills larvae.



Before
Healthy internals



After
ruptures internal organs

Combined natural attractants with pesticide free acoustic larvicide gives you a truly set-and-forget, effective and environmentally safe method of mosquito control.

Getting Started



Please Read Manual Carefully

Read the Operators Manual and follow all warnings and safety instructions. Failure to do so may result in damage to the unit or a voiding of warranty.

You are cautioned that any changes or modifications not expressly approved in this manual could void your warranty.

Only use New Mountain 12 volt **rechargeable** Li-ion batteries (Part # SL 01-03-1) with a minimum 600mAh rating.

DO NOT EXPOSE TO TEMPERATURES BELOW 32° F or 0°C

SIRENIX™ must be located in an area to receive at least 6 hours of direct sunlight daily or optional auxiliary power supply must be used.

Indoor or undercover operation requires the use of the optional auxiliary power supply (Part # SL-01-04-03)

Keep these instructions. Refer to them often and use them to instruct other users.



Symbol denotes important information

For a video instruction, check the QR code below.

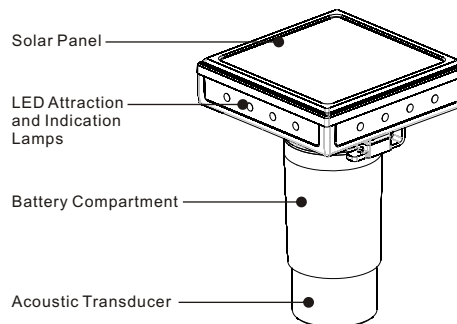


Getting Started

Your SIRENIX™ integrated system consists of three major components made of the highest quality and reliable materials to ensure long life. All plastics are UV stable. The solar panel is top quality enclosed in glass, not plastic which typically fades and reduces output in short order: The Solar panel will maintain its performance for many years.

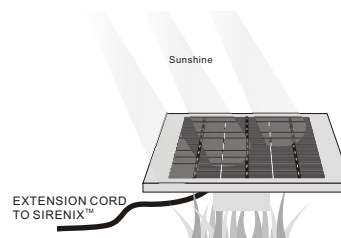
Integrated Acoustic Source (IAS)

Waterproof self-contained system with Solar panel, Acoustic amplifier/controller, Sound transmitter, 12V LI-ion battery, indicating and attractive lights. This component transmits the lethal acoustic energy into the water killing the larvae. The blue LED are an attractant to mosquitoes as well as serving a status indicator. It identifies normal system operations and will indicate if water needs to be manually added.



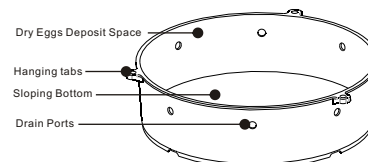
Detachable Solar Panel

The detachable solar panel allows for flexible installation of the SIRENIX™ system to both optimize attractiveness for the mosquito and maximum solar energy. The included two meter extension cable allows the solar panel to be positioned to receive maximum sunlight. Additional (optional) extension cables can be used for greater flexibility.



Hatching Basin

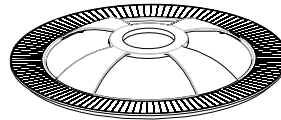
UV Stable plastic pan with side drain ports. This basin fills with water either from natural rain or manually by hand. The side drain ports provide a dry shady space above the water where some species of mosquito will lay their eggs. The bottom is slightly sloped to the center always allowing water to touch the acoustic transmitter.



Getting Started

IAS Support and Shade cover

UV Stable plastic pan with side drain ports and cover to support the Integrated Acoustic Source and provides shade and visual attractants for

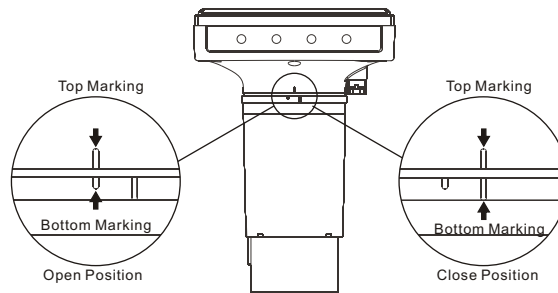


Setting up your Sirenix™

1. Battery Installation

Twist off the lower section of the IAS exposing the 9V battery connector, connect the battery, place it in the holder and close the lower section by twisting. Observe the blue LED light illuminate and cycle for a few seconds.

Make sure to align properly the Top Marking and the Bottom Marking as shown below. Do not use excessive force.



2. Shade Cover

Carefully place the cover onto the Hatching Basin. The vertical lip will fit snugly inside the hatching basin

3. Install IAS

With the battery installed in the IAS place the IAS through the large hole in the IAS Support and Shade Cover, insure the acoustic transducer sits flat on the bottom of the Hatching Basin. Observe all of the indication lamps flash in unison every 8 seconds indicating the transducer is dry and the Hatching Basin is Empty.

4. Placement and Initial Filling

The Hatching Basin must sit on a flat and stable surface. Add tap water to the hatching basin. Observe the indication lights are not flashing in unison.

Contents

Package contains

- one (1) Sirenix™ integrated system;
- one (1) Charging extension cable.
- one (1) 12V Li-ion rechargeable battery pre-installed.

Operation and Maintenance

Placement

The performance of the Sirenix™ systems can be optimized by having sufficient devices strategically placed on the property. Sirenix™ for outdoor use is solar powered. It needs a certain amount of sunlight to be effective. Since the unit has its own shade area it does not need to be under a full canopy. The best locations is on the periferial of a wooded area where it will receive at least six hours of sunlight each day.



For best control use three traps for every (1000m²) or ¼ acre.

Indications

The blue LED on the IAS act as attractant to the gravid mosquito but also provide the owner a status of operation. Normal operation is indicated by one LED on each side of the IAS illuminating briefly every minute. Low water is indicated by all blue LED illuminating in unison every 8 seconds.

SMART TWILIGHT SENSING (STS) is an intelligent analysis of the solar panel output which over a few days learns your local sunrise and sunset times. In anticipation of sunset the LEDs will begin to illuminate in a pattern simulating movement. Visual movement que to female mosquitoes indicates live animals and a source of food. These lights will operate for about one hour and then go back to the normal routine indicating system status. Many mosquitoes swam at dusk and dawn but using STS we conserve electrical power saved from daylight to activate the acoustic killing energy throughout the evening and day.

Routine Maintenance

The 9V Li-ion rechargeable battery should be replaced on annual basis. When you observe the attraction and Indicator Lamps flashing in unison once every 8 seconds, this indicating that the water level is beginning to get low. If rain is not imminent, please fill with tap water to the bottom of the drain ports. The water will soon become rich in organic matter giving off an aroma attractive to the female



It is recommended that this water be emptied every 2 months and the hatching basin simply wiped clean with a towel. DO NOT USE ANY CLEANING CHEMICALS..

Tips and Best Mosquito Control Practices

Mosquitoes have evolved over the eons and have developed numerous ways to adapt and thus are difficult to control. Your first step in purchasing the Sirenix™ will begin to improve your environment but your efforts should not stop there. We recommend following World Health Organization and CDC recommended steps many of which can be found here

<https://www.cdc.gov/features/stopmosquitoes/index.html>.

We recommend you follow these steps as a minimum

1. Eliminate all standing water. Mosquitoes will breed in even the smallest amount of water. You should inspect your property routinely to eliminate all sources of standing water such as empty small containers, trash and tires.
2. Wear proper clothing to minimize expose to skin when possible.
3. Apply mosquito repellents.



Parts and Accessories

Added accessories or spare parts are available to enhance the operation of your Sirenix™ or keep it in top shape and can be ordered via email sale@newmountainintl.com. This package will be sufficient for a full year of operations. If you will be operating indoors or areas of extreme dense shade we suggest the auxillary power pack which supplements the solar panel for all power when indoors and ensure sufficient power when under heavy cover or large area manmade or natural canopies.

Item	Part Number
1) 12V Li-ion rechargeable Battery	SL-01-03-1
2) Removable Solar Panel	SL-01-04-1
3) Extension Cable	SL-01-05-1
4) Auxillary Power Supply	SL-01-04-3
5) Hatching Basin	SL-01-02-1
6) Integrated Acoustic source (IAS)	SL-01-01-1
7) IAS Support and Shade Cover	SL-01-03-1

Warranty

This warranty only applies to the original purchaser. To activate your warranty, go to www.newmountainintl.com/warranty and complete warranty activation.

This device was built to exacting standards and carefully inspected and tested prior to shipment. Your Sirenix™ is warranted to be free of defects in materials and workmanship for a period of one year from the date of purchase. The 9V Li-ion rechargeable battery is warranted for 90 days.

The warranty does not cover device failure due to owner misuse or negligence. The warranty shall not apply for damages due to improper operation, maintenance or storage such as excessive storage temperatures or application of any chemicals.

If you have any questions regarding your Sirenix™ product or the warranty, please contact our Customer Care Team at +65 6841 2986.

